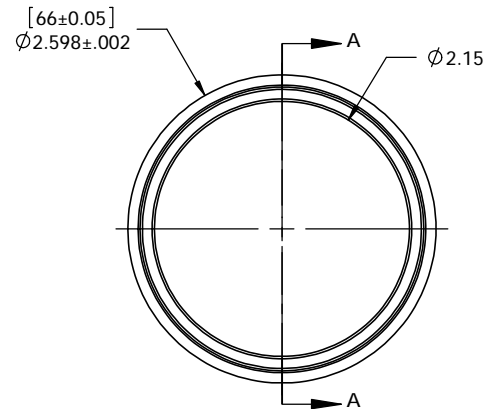
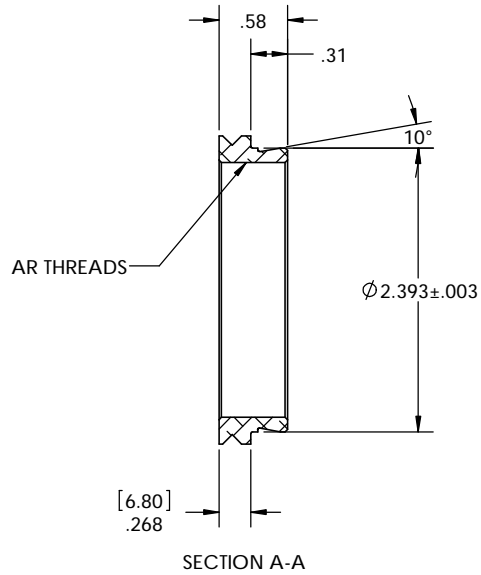


PN 5056
STK NO 19667



UNLESS OTHERWISE SPECIFIED: DIMENSIONS ARE IN INCHES TOLERANCES: FRACTIONAL ± ANGULAR: MACH ± BEND ± TWO PLACE DECIMAL ±.007 THREE PLACE DECIMAL ±.003	DRAWN	NAME	DATE	Optec Inc. TITLE: INTES MCT-180/MK-69 TO OPTEC 2400
	CHECKED	LD	04/09/10	
	ENG APPR.			
	MFG APPR.			
	Q.A.			
THIRD ANGLE PROJECTION	MATERIAL	CONTRACT		SIZE
	6061-T6	OPTEC-2400		DWG. NO.
FINISH SATIN ETCH BLACK				B
DO NOT SCALE DRAWING				17-06883
				SCALE: 1:1
				WEIGHT:
				SHEET 1 OF 1