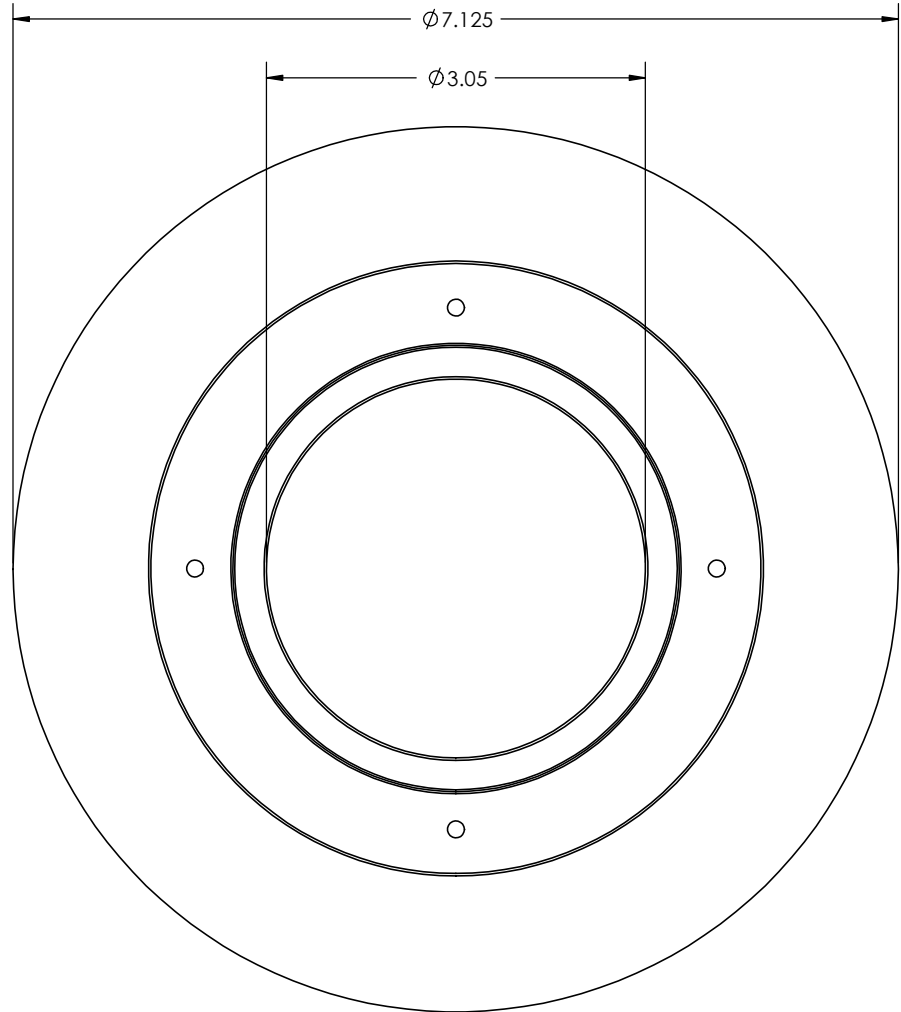
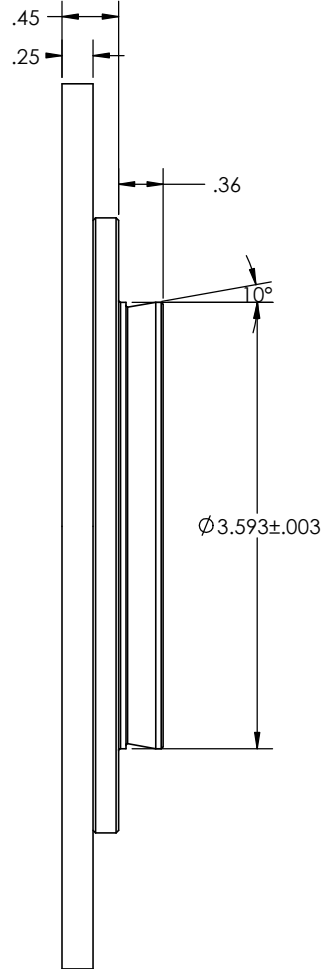
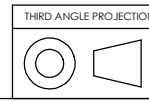


STK NO 17818



UNLESS OTHERWISE SPECIFIED: DIMENSIONS ARE IN INCHES TOLERANCES: FRACTIONAL ± ANGULAR: MACH ± BEND ± TWO PLACE DECIMAL ±.007 THREE PLACE DECIMAL ±.003	NAME	DATE	Optec Inc. TITLE: CDK 17/20 TO OPTEC 3600		
	DRAWN	LD 10/12/09			
	CHECKED		CONTRACT OPTEC 3600	SIZE B	DWG. NO. NA
	ENG APPR.				
	MFG APPR.				
Q.A.		SCALE: 1:1	WEIGHT:	SHEET 1 OF 1	



MATERIAL	6061-T6
FINISH	FROSTKOTE BRIGHT DIP BLACK
DO NOT SCALE DRAWING	